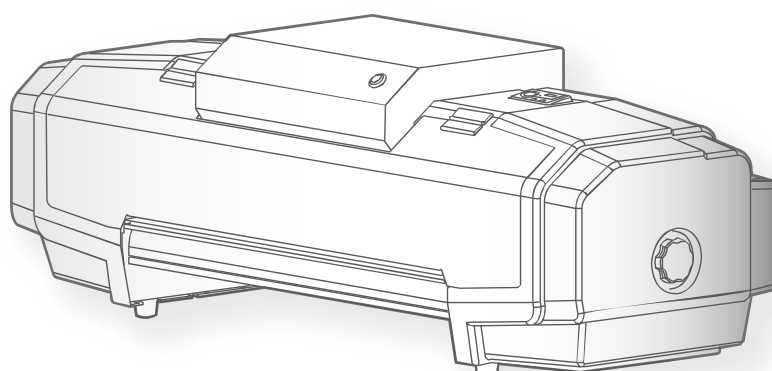


VJ-628MP

Printer Driver User's Guide



1. Settings	1
2. Functions	2
3. Change Settings	10
4. Troubleshooting	12

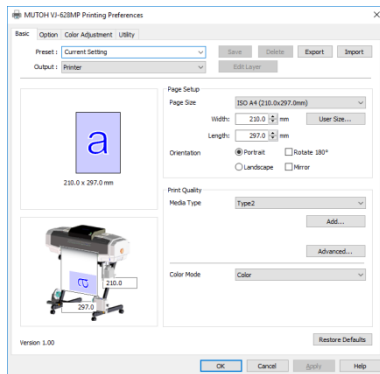
-
- Unauthorized copying or duplication of the whole or part of the contents of this Guide is prohibited.
 - The product specifications and the contents of this Guide are subject to change without notice.
 - Every care has been taken in writing the contents of this Guide, but please contact MUTOH or the dealer you purchased the product from if you find any unclear, erroneous or otherwise unsatisfactory content in the Guide.
 - Please be aware that MUTOH will not be liable in any way for failures or accidents that result from handling or operating the printer according to any procedures other than those set forth in this Guide.
 - Company names and product names that appear in this Guide are registered trademarks of the respective companies.

1. Settings

1.1 Add media profiles

VJ-628MP provides media profiles to apply the optimal print setting (print mode/color) on each media type.

[1]

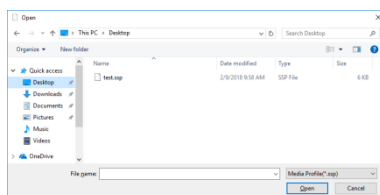


Select the media type number from Basic > Media Type.

“Media type” setting is reflected to printer’s “User Type” setting.

If you change the setting from the Utility tab after selecting the media type, the assigned printer’s “User Type” setting will be also changed.

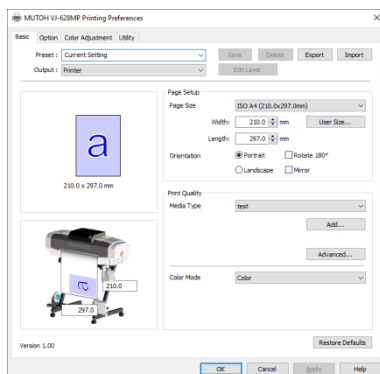
[2]



Select the media profile (file extension: SSP) and click **Open**.

[MUTOH Club offers a variety of media profiles.](#)

[3]



Media profile is added.

The name or print setting of the media profile can be changed from Advanced.

2. Functions

2.1 White Ink Printing

This section explains white ink printing procedure.

[1]



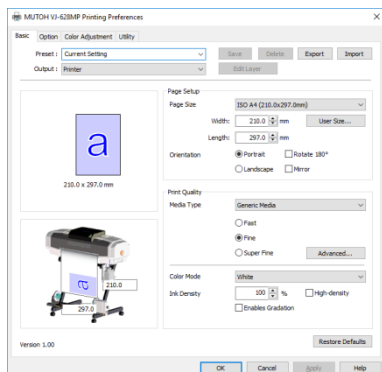
We will print the MUTOH logo on the left with white ink.

[2]



Printer driver cannot print the white area on the image. To print with white ink, change the white color of the logo to another color.

[3]



From the Basic tab, select **White** in the Color Mode field, and then print the logo.

If you check "Enables Gradation", gradient effect with white ink can be achieved.

From the printer driver, color ink and white ink cannot be printed at the same time. Print color layer, white layer individually.

2.2 Layer Printing

This section explains layer printing procedure.

To create layer data, image editing applications that have layer functions are recommended to use (here, we use Adobe Illustrator CS5).

Printer driver cannot print color ink and white ink at the same time. Use MUTOH Layer Editor (Ver.5.2.0 or later) for layer printing.

[1]



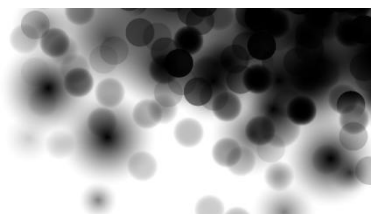
We will print the image on the left by sending color/white layer data individually.

[2]

Using the layer function in your image editing application, create three layer data (Color/ White).

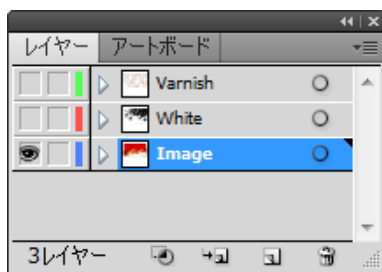


Color



White

[3]



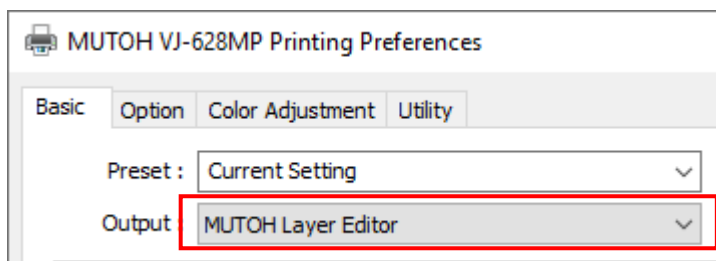
With the setting described below, print from the application by sending the layer data in order of Color (Image) => White.

In Illustrator, select the layer you want to print from the layer window and print it.

1. Color

Illustrator:
Driver:

Show the Image (Color) layer and hide the rest of layers.
From the Basic tab,
- select **MUTOH Layer Editor** in the Output field.



- select **Color** in the Color Mode field.
- print the data.

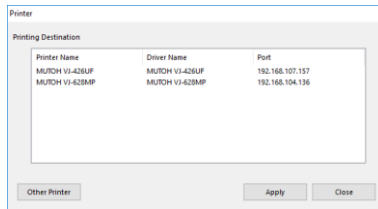
2. White

Illustrator: Show the White layer and hide the rest of layers.

Driver: From the Basic tab, select **White** in the Color Mode field, and print the data.

In this example, check **Enables Gradation**.

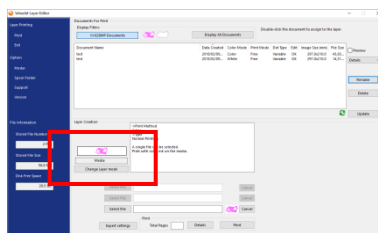
[4]



Start MUTOH Layer Editor.

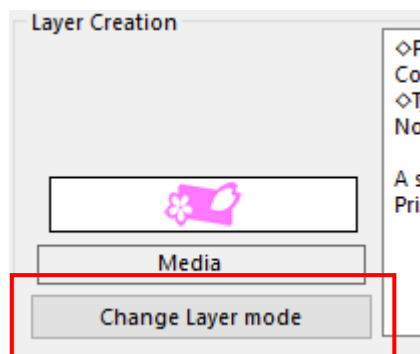
For the first booting, the following dialog appears. Select **VJ-628MP** and click **Apply**.

[5]

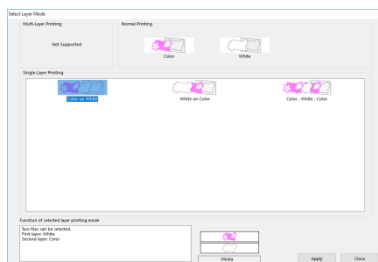


From the main menu, specify printing method with following steps.

Click **Change Layer mode** to open the Select Layer Mode menu.



[6]

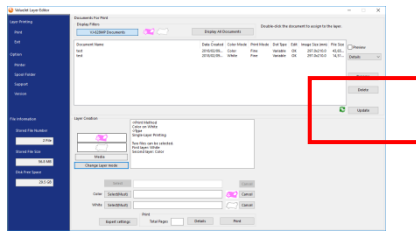


Select a desired layer mode for color and white.

In this example, we will select Color on White to print white layer first and color layer on the top.



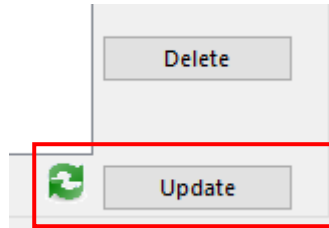
[7]



Make sure the layer data sent from the application are listed in the **Document** field.

If any of them is missing, take any of the following steps.

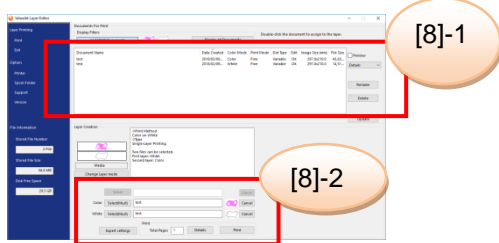
- a) If the **update icon** appears, click **Update**.



- b) From your control panel, go to Hardware and Sound > Devices and Printers, and check if the data is still processing.

If none of above helps, make sure you selected MUTOH Layer Editor from the output field in Step 3 when printing the Color layer data (If not, the data is directly sent to your printer).

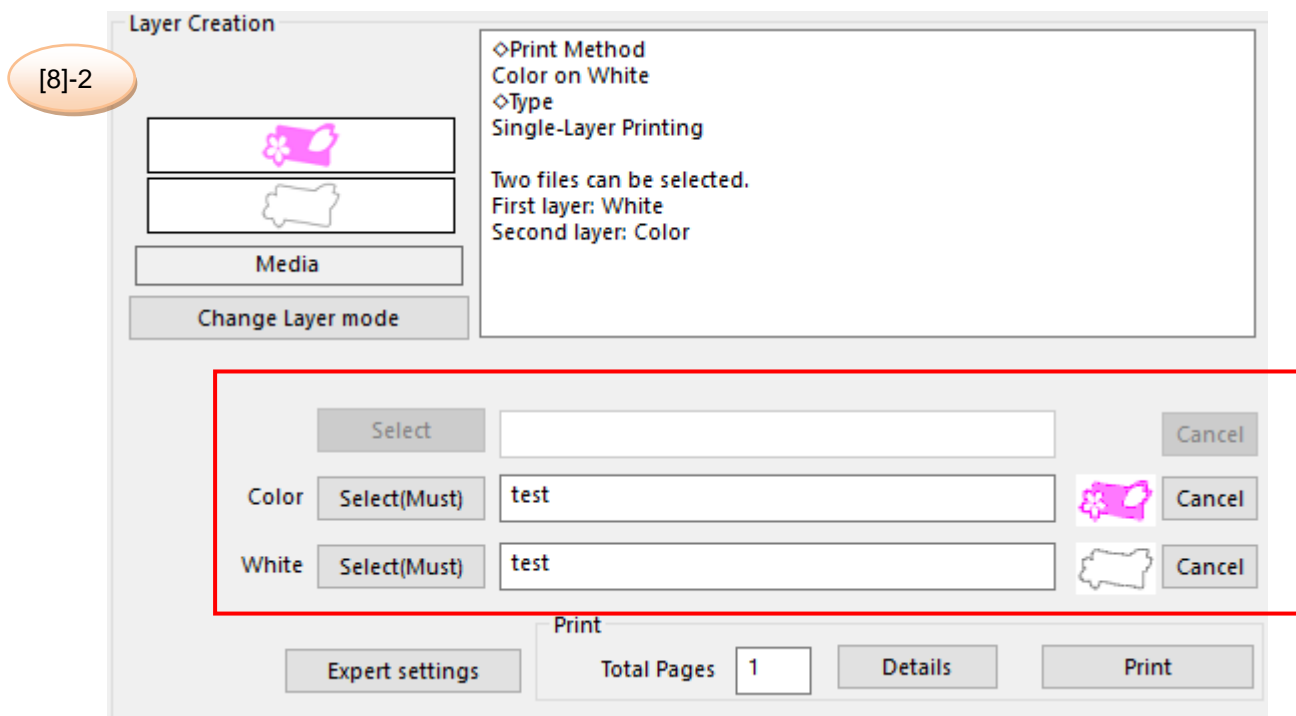
[8]



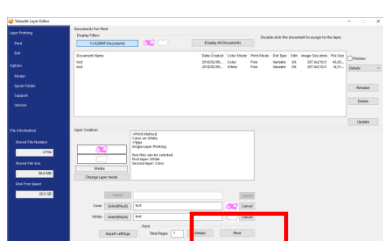
When all the files are displayed, double-click on each file;
Color/ White.

Color/ White files are assigned to the layer accordingly.

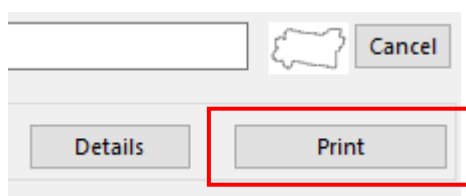
Document Name	Data Created	Color Mode	Print Mode	Dot Type	Edit	Image Size (mm)	File Size
test	2018/02/09...	Color	Fine	Variable	OK	297.0x210.0	43,65...
test	2018/02/09...	White	Fine	Variable	OK	297.0x210.0	14,51...



[9]



Click **Print** to start printing.



2.3 Step and Repeat

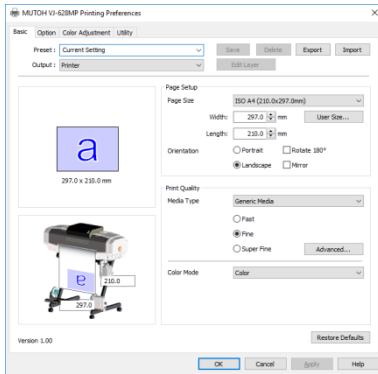
“Step and Repeat” function allows you to fill a specified area with rows and columns of duplicated image.

[1]



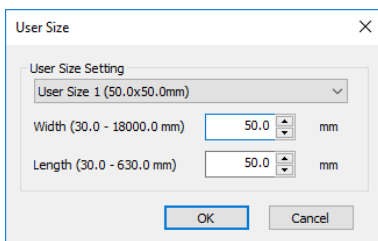
Using the image on the left, we will duplicate it in rows (x4) and columns (x3) for printing.

[2]



To specify the print size of the original image, go to Basic > User Size.

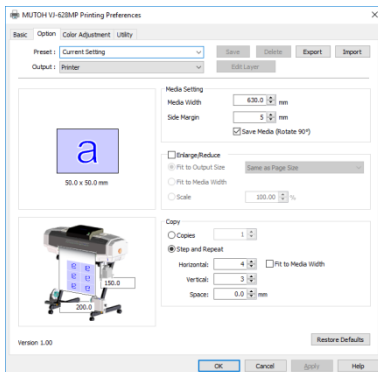
[3]



Enter the print size of the original image.

For example, if you specify “50x50mm” here and number of duplicated image “row: 4 x column: 3” in the step 4), the data will be printed in 200x150mm size.

[4]



From the Option tab, check **Step and Repeat** and specify how many image to be duplicated in rows and columns (row x column).

[5]



Print from any application.

The data will be printed as shown left.

2.4 Step and Repeat -Repeating patterns-

Using this “Step and Repeat” function, this section explains how to create seamless repeating patterns from a single image mostly useful for textile application.

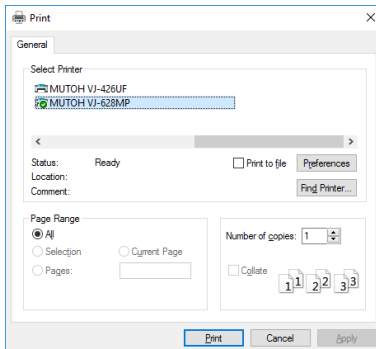
[1]



Prepare the image you want to repeat and open Windows Paint.

Select the image with square dimension.

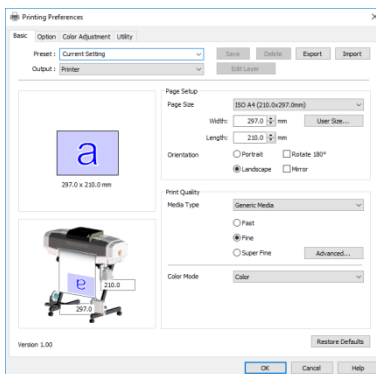
[2]



Go to Menu > Print. Print dialog appears.

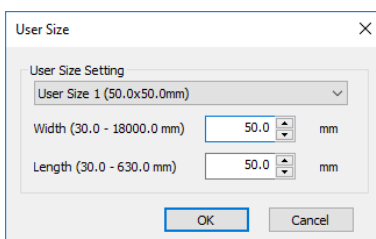
In the Select Printer field, select **MUTOH VJ-628MP** and then click **Preferences**.

[3]



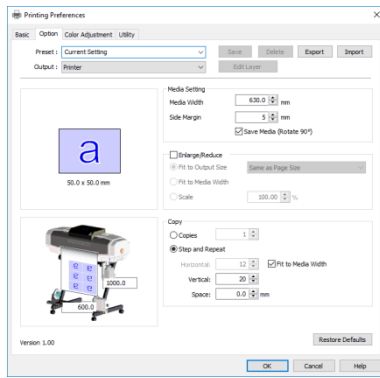
From the Basic tab, click **User Size**.

[4]



Specify the print size of the original image.

[5]

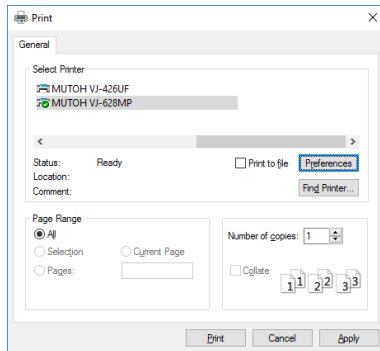


From the Option tab, check **Step and Repeat** and specify how many image to be repeated in rows and columns (row x column).

Layout the repeating patterns of images all over the media width (610mm).

If you specify the print size of the original image: 50x50mm and number of repeating image in rows and columns: 12x20, it will be printed in 600x1000mm size.

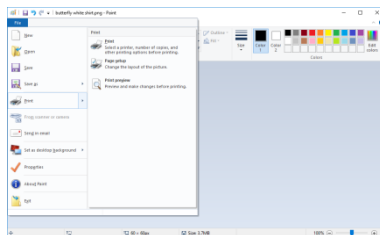
[6]



After completing the layout setting, click **Apply** and then click **Cancel** to close the Print dialog.

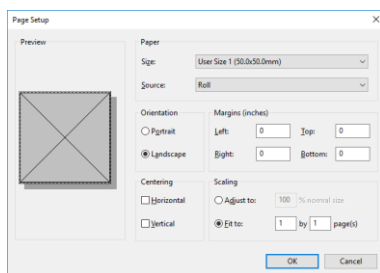
Before start printing, we will move on to the page setting.

[7]



From the menu, go to Print < Page Setup.

[8]



Set all the margins to 0mm. In the Scaling field, check **Fit to: 1 by 1 page(s)** and click **OK**.

[9]



From the menu, go to Print and click **Print**.

The repeating pattern from the single image will be printed as shown left.

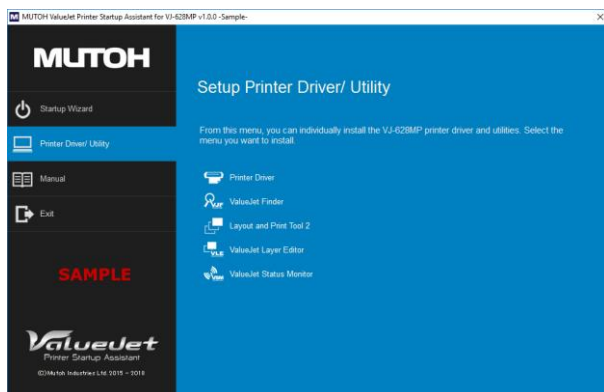
If an original image is other than square dimension or the application you use automatically sets margin space to the original image, it might create lines or gaps between patterns.

3. Change Settings

3.1 Change Printer's IP Address

To add the printer or change the printer's IP address, start the printer driver installer from Mutoh ValueJet Printer **Startup Assistant** (insert the bundled software CD-ROM).

If your PC and printer are connected on the same network, new IP address can be assigned even you have not determined the specific IP address.



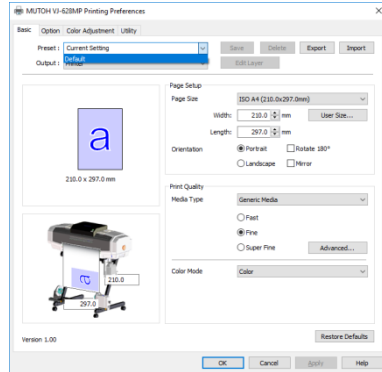
Note

If you do not have the bundled software CD-ROM, download the latest printer driver from MUTOH Club:

<https://club.mutoh.co.jp/mutoh/guser/>

Status	Procedure
If you want to add the printer:	<p>Perform the printer driver installation by following the Startup Assistant.</p> <p>For the details, see the bundled Startup Guide.</p> <p>The Startup Guide is stored in the Manual folder on the CD-ROM.</p>
If you want to change the printer's IP address:	<p>[1] Change the Printer's IP address from MUTOH LFP Finder.</p> <p>[2] After selecting the printer model on the Startup Assistant, click Printer Driver/Utility > Printer Driver.</p> <p>[3] Remove the previous printer via the Printer Setup window:</p> <div data-bbox="909 1612 1308 1944"></div> <p>[4] Follow the "If you want to add the printer" procedure to perform the printer driver installation.</p>

3.2 Initialize Printer Settings

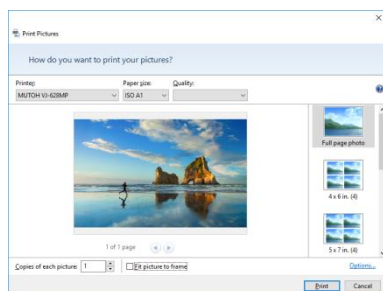
Status	Procedure
If you want to restore the printer driver settings to default:	<p>Go to the Printer Preferences and select Default in the Preset field .</p> 

4. Troubleshooting

4.1 Print from Windows Photo Viewer

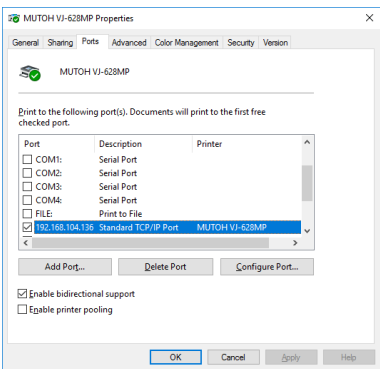
If you choose “Full page photo” in Windows Photo Viewer, you can only print up to 762mm (A1 size etc.) due to the functional restriction of Windows Photo Viewer

[1]



If you want to print larger than 762mm, uncheck “Fit picture to flame”.

4.2 Cannot start printing

Status	How to solve
Printer has received print data, but does not start printing. LED Lights - Green: Blinks	Printer has received data, but the heater system is warming up. Please wait.
Printer does not receive any data and a print error message from Windows appears.	<p>Check the network connection.</p> <ul style="list-style-type: none"> <input type="checkbox"/> Can you find the network connection from MUTOH LFP Finder or printer driver installer? <ul style="list-style-type: none"> ✧ Yes <p>Check the port setting of the printer.</p>  <ul style="list-style-type: none"> ✧ No <ul style="list-style-type: none"> ☞ Make sure the network cable is securely connected. <input type="checkbox"/> Is the IP address for the printer overlapped with other devices? <ul style="list-style-type: none"> ☞ Check your network administrator and assign unique IP address to the printer.

4.3 Cannot print on correct position or print at correct size

Status	How to solve
When sending a print data from a word processor or spreadsheet software, the printer does not print at the specified print size.	<p>Check your application and the printer driver settings and make sure any unintended resize setting is invalid.</p> <p>Some word processor and spreadsheet software do not ensure to print at exact size.</p> <p>Please consider to use following software:</p> <ul style="list-style-type: none">• Layout and Print Tool 2 (Supplied with the printer)• Graphics software (Adobe Illustrator, Photoshop etc.)• RIP (Raster image processor) software for this printer

4.4 Printed color differs from original image

Status	How to solve
The printed color significantly differs from the original image color.	<p>If you print a CMYK color model data, the printed color may differ from the original image color.</p> <p>Use 24-bit RGB color model for the color data.</p> <p>If you install any graphic application that enables to print a CMYK color model data, see its operation manual.</p>

MUTOH